



The Company

Facts and figures



rff Rohr Flansch Fitting
Handels GmbH

Partner of the industry

Expertise does not come about overnight, but arises from experience and skills. We have been in the market since 1976 and have made a name for ourselves as partners of the industry. Performance and consistency are what motivate us. Every one of our 400 employees considers it their obligation to find for you not just any solution, but the absolute best solution.

Let's face it – you want first-class material quality, planning certainty and cost-effective purchasing. And that's exactly what we offer. With more than 14,000 tons of pipes, flanges, elbows, buttweld fittings and pipe equipment in our two central warehouses in Stuhr/Bremen and Beucha/Leipzig we have the ideal set-up to do so.

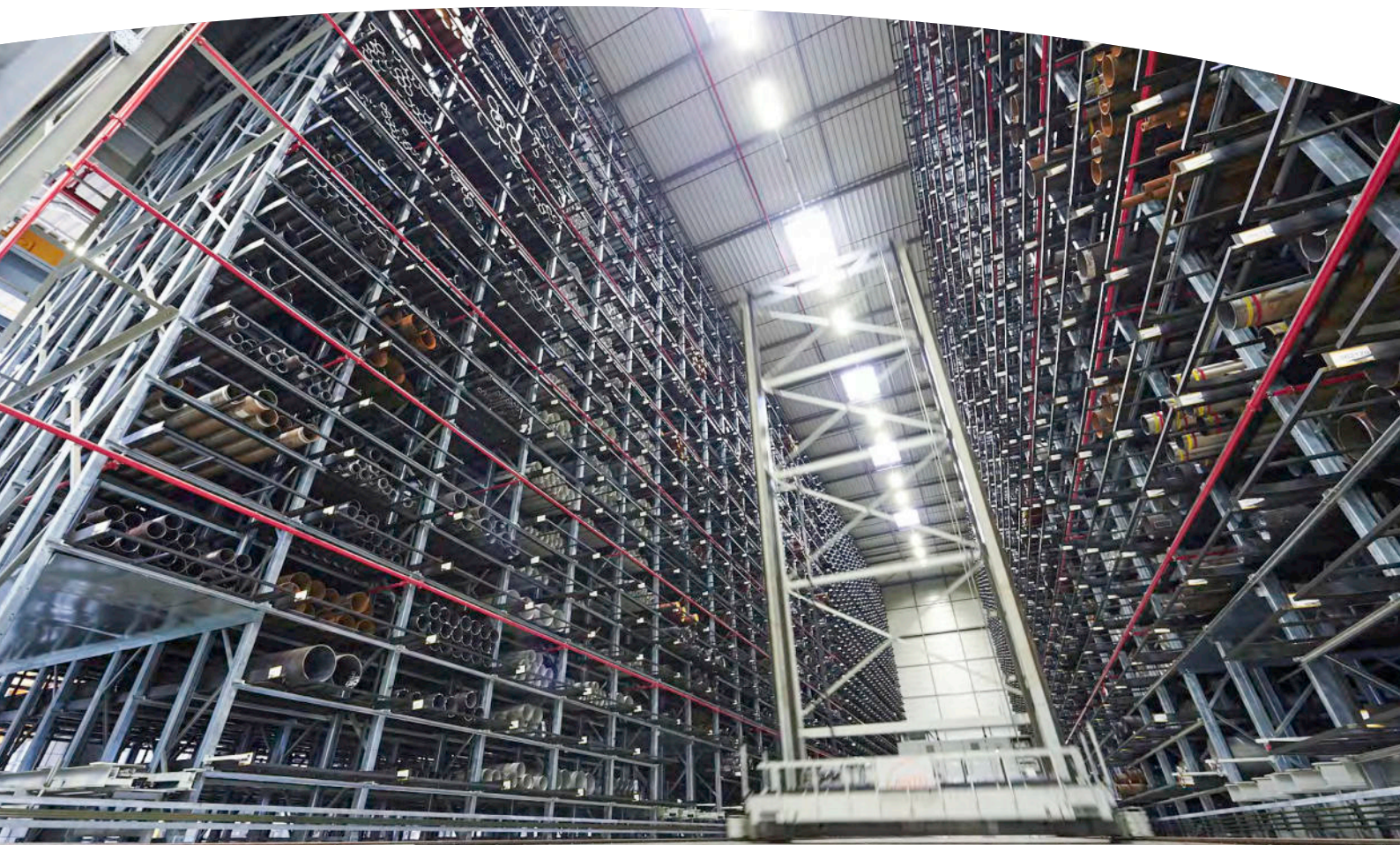
With rhyme and reason: As a competent partner for specific requirements within and across several industrial sectors, we support you in the planning, construction and maintenance of your project. With the delivery service, direct from our warehouses, we can assure you that your material leaves our company securely picked and safely packed. Moreover, our efficient logistics – including our own fleet and contracted carriers – provide a reliable distribution “just-in-time”.

We are there when you need us.
rff – Strongly connected.

Cover: Outside view Head Office Stuhr/Bremen



If you would like more information, please call us or browse our Internet pages: rff.de/en



Automatic storage system for pipes in Beucha/Leipzig
Picking hall „Kasto II“

rff at a glance

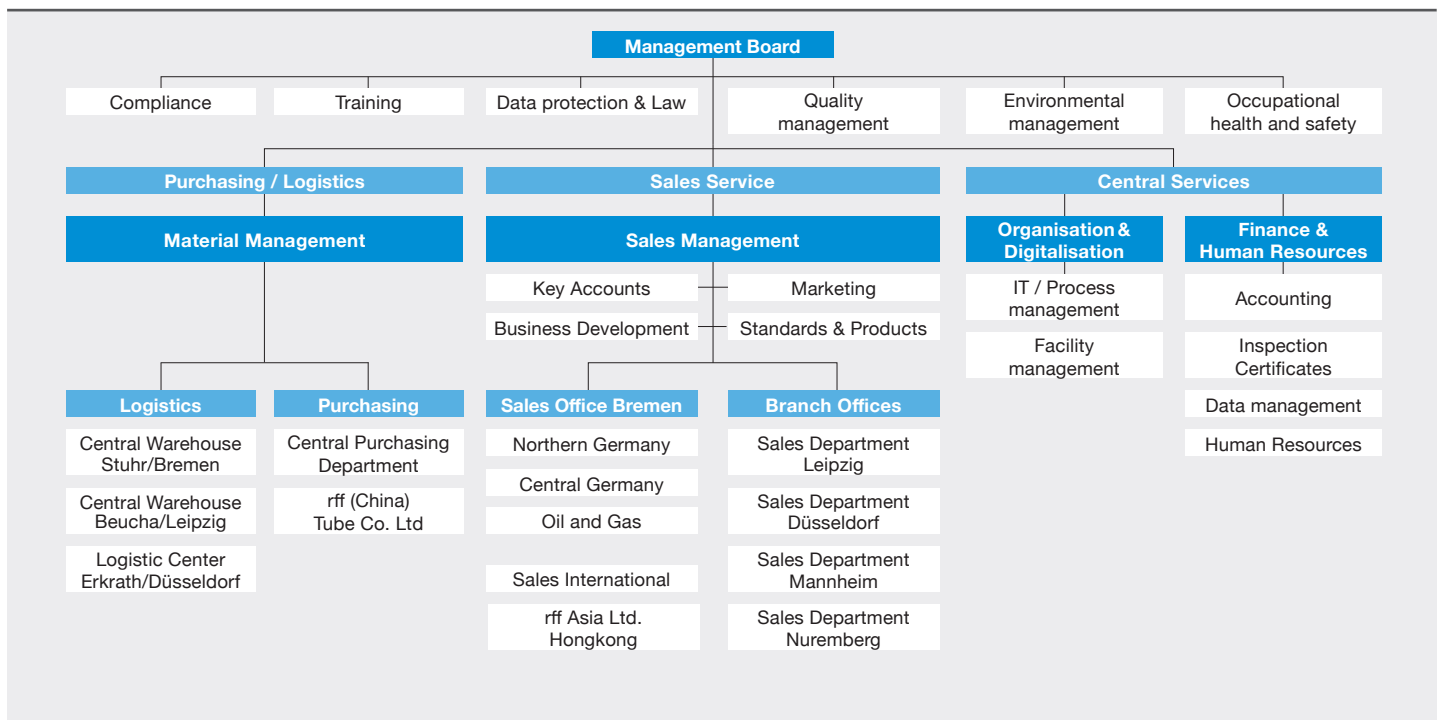
rff Rohr Flansch Fitting Handels GmbH	
Head Office	28816 Stuhr/Bremen, Germany
Sales Management	Phone +49 421 8771 2002 sales@rff.de
Purchasing Department	Phone +49 421 8771 1099 einkauf@rff.de
Management Systems	Phone +49 421 8771 2700 ims@rff.de
Accounting Department	Phone +49 421 8771 2446 rechnungswesen@rff.de
Central warehouse for pipe connections and pipe equipment	28816 Stuhr/Bremen
Central warehouse for pipes	04824 Beucha/Leipzig
Logistic center	40699 Erkrath/Düsseldorf

Facts and figures 2022	
Managing Directors	Michael Alexi Jörg Delveaux
Division Manager Finance & HR	Dieter Revink
Division Manager Organisation & Digitalisation	Thomas Büssenschütt
Head of QM, EM, OHS, Law and DPO	Jens Fuhrken
Head of Purchasing	Thomas Kutschker
Year of foundation	1976
Employees / Trainees	359 / 21 (as of 1/2022)
Legal form	GmbH (Ltd company)
Commercial register number	Walsrode, HRB 110184
Common capital stock	10,110,000 euro
Total assets 2021	76,100,000 euro
Tax number	46/201/08765
VAT number	DE 116634545
DUNS	31-587-5336
Bank details	Kreisparkasse Syke
IBAN	DE58 2915 1700 1130 0484 89
BIC	BRLADE21SYK
Liability insurance / limit of liability	Generali 15,000,000 euro
Turnover	2021 129,000,000 euro 2020 130,000,000 euro 2019 134,000,000 euro
Covered warehouse space	44,800 m ²
Office space	15,100 m ²
Inventory	14,000 t

Our certifications	
Quality management	DIN EN ISO 9001 Nr. 07 100 010599
Environmental management	DIN EN ISO 14001 Nr. 07 104 010599
Occupational health and safety management	DIN ISO 45001 Nr. 07 126 010599
Mechanical processor acc. to	AD 2000-W0 Nr. 07/203/1326/WP/0538
Quality management acc. to	PED 2014/68/EU Nr. 07/202/1326/WZ/0538
Restamping agreement acc. to	DIN EN 764-5, section 6 Nr. 07/701/1326/UH/0538

Our range of services	
1.	14,000 tons of stock in pipes, flanges and fittings
2.	High performance logistic centers
3.	World wide delivery service
4.	Mechanical processing / pipe cutting facility
5.	Corrosion protection
6.	Material testing service
7.	Wall thickness calculations on pipe fittings
8.	Project management
9.	IT services such as "My rff", MTRs via Internet, Online catalogues
10.	Management systems and other certificates

Our delivery programme	
Pipes/Tubes	DIN EN 10216 / 10217 / 10208 ASME B 36.10 / B 36.19 / API 5L
Flanges	DIN / DIN EN 1092-1 / DIN EN 1759 DIN 21057-6 / ASME B 16.5 / B 16.47 BS 3293 / API 6A
Elbows / Butt weld Fittings	DIN / DIN EN 10253 / ASME B 16.9
Pipe Equipment	Pipe clamps, U-bolts, Pressed collars, Heads, Ellipsoidal heads, Weld-in elbows, Branch saddle, Pipe couplings, Forged steel fittings, Threaded pipe fittings
Material grades	Non-alloy and alloy heat resistant steels, Low temperature, Fine-grain steels, High yield steels, Stainless and acid resistant steels



rff Rohr Flansch Fitting

Handels GmbH

Bremen Head Office

Carl-Zeiss-Straße 21
28816 Stuhr/Bremen, Germany
Phone +49 421 8771 0
rff@rff.de · rff.de/en

Central warehouse for pipe connections and pipe equipment

28816 Stuhr/Bremen, Germany

Central warehouse for pipes

04824 Beucha/Leipzig, Germany

Sales Department Bremen

• **Northern Germany**

Phone +49 421 8771 1010
nord@rff.de

• **Central Germany**

Phone +49 421 8771 1030
mitte@rff.de

• **Oil and Gas**

Phone +49 421 8771 1020
projekte@rff.de

• **International Sales**

Phone +49 421 8771 1090
export@rff.de

Branch Offices Germany

Leipzig

04824 Beucha/Leipzig
Phone +49 34292 85 500
leipzig@rff.de

Düsseldorf

40699 Erkrath/Düsseldorf
Phone +49 2104 9386 0
duesseldorf@rff.de

Mannheim

68309 Mannheim
Phone +49 621 71771 600
mannheim@rff.de

Nuremberg

90409 Nuremberg
Phone +49 911 95249 0
nuernberg@rff.de



Worldwide delivery service

oil industry · refineries · pipeline construction
chemical industry · planning and engineering
natural gas industry · power plant technology
mechanical engineering · public utility companies
water technology · sewage treatments plants
waste water technology · apparatus engineering
environmental engineering · shipbuilding
manufactures of pumps and fittings
plant engineering



rff Rohr Flansch Fitting
Handels GmbH